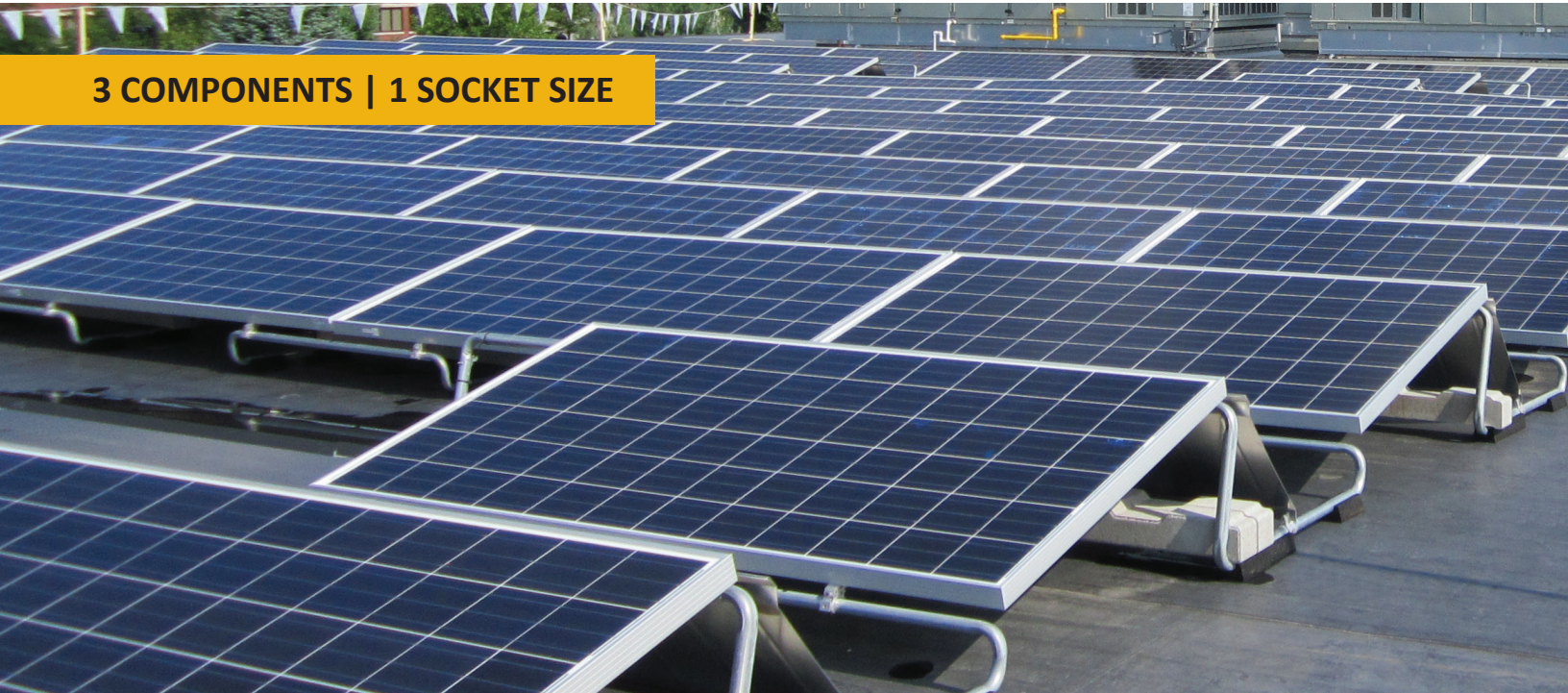


Kodiak Bear

Flat Roof Mounting Solution

3 COMPONENTS | 1 SOCKET SIZE



Kodiak Bear Flat Roof Mounting Solution 10, 15, and 20 Degree

The Kodiak Bear™ mounting solution redefines efficiency in flat roof mounting systems. Featuring extensive factory pre-assembly and just three major components, the entire system can be installed with a single socket size. An innovative, proprietary ballast block makes ballasting simpler than ever, while the system's versatility ensures that partners can choose the module that suits their project best.

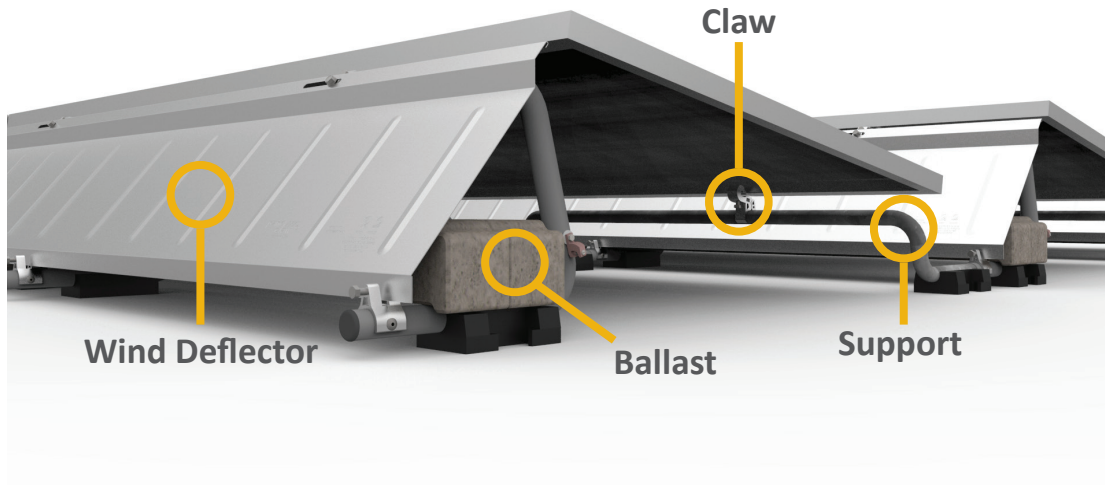
PanelClaw delivers mounting and balance-of-system solutions to accelerate the adoption of photovoltaics worldwide.



Kodiak Bear Flat Roof Mounting Solution 10, 15, and 20 Degree



3 COMPONENTS | 1 SOCKET SIZE



Three Components

Support

- Universal, module-independent design.
- Multiple inter-row spacing options.
- Smooth, tubular design for easy handling and superior roof protection.
- Integrated recycled rubber roof protection pads, engineered for efficient weight distribution.
- North and South Supports to facilitate clean array edges, maximum module density, and enhanced layout flexibility.
- At least 7" clearance between lower module edge and roof surface, facilitating maintenance, obstruction avoidance, and wire management.
- Pre-installed clamps for easy Wind Deflector installation.
- Just one fastener size.
- Mechanical attachment option.
- Integrated wire management option.

Wind Deflector

- Ribbed design for reduced material content.
- Chamfered edges and lightweight construction to facilitate easy handling and safe installation.

Kodiak Claw

- Factory-installed stainless steel screw to attach Claw to Support frame.
- Serrated design to increase clamping power.

Included Ballast

- Proprietary concrete block, hydraulically pressed with a compressive strength of 8,000 psi.
- High freeze-thaw resistance.
- Ergonomic design for easy handling in all weather and installation conditions.

Specifications

Application

Flat Roof
(max slope 5 degrees)

Installation Speed

~160-180 modules per day (3-person crew)

Module Tilt Angle

10, 15, or 20 degrees

Module Orientation

Landscape

Basic Wind Speed

Up to 120 mph
(193 km/h)

Wind Exposure Category

B, C, and D

Array Platform Load

~3.5-9 psf (racking, ballast, and modules)

Building Height

Up to 60 feet
(18.3 meters)
(custom upon request)

Standard Warranty

10 years